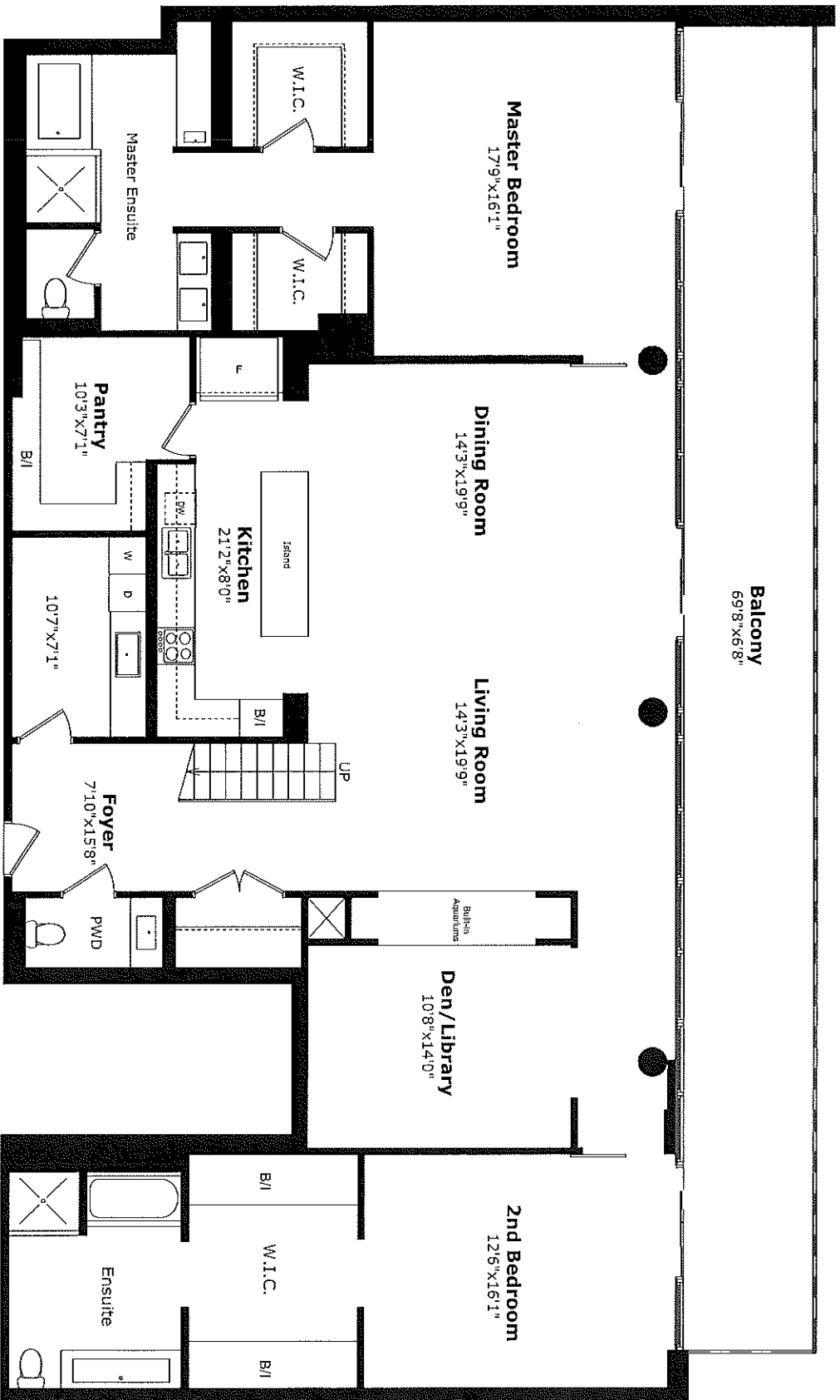


478 KING STREET WEST

SUITE PH 2

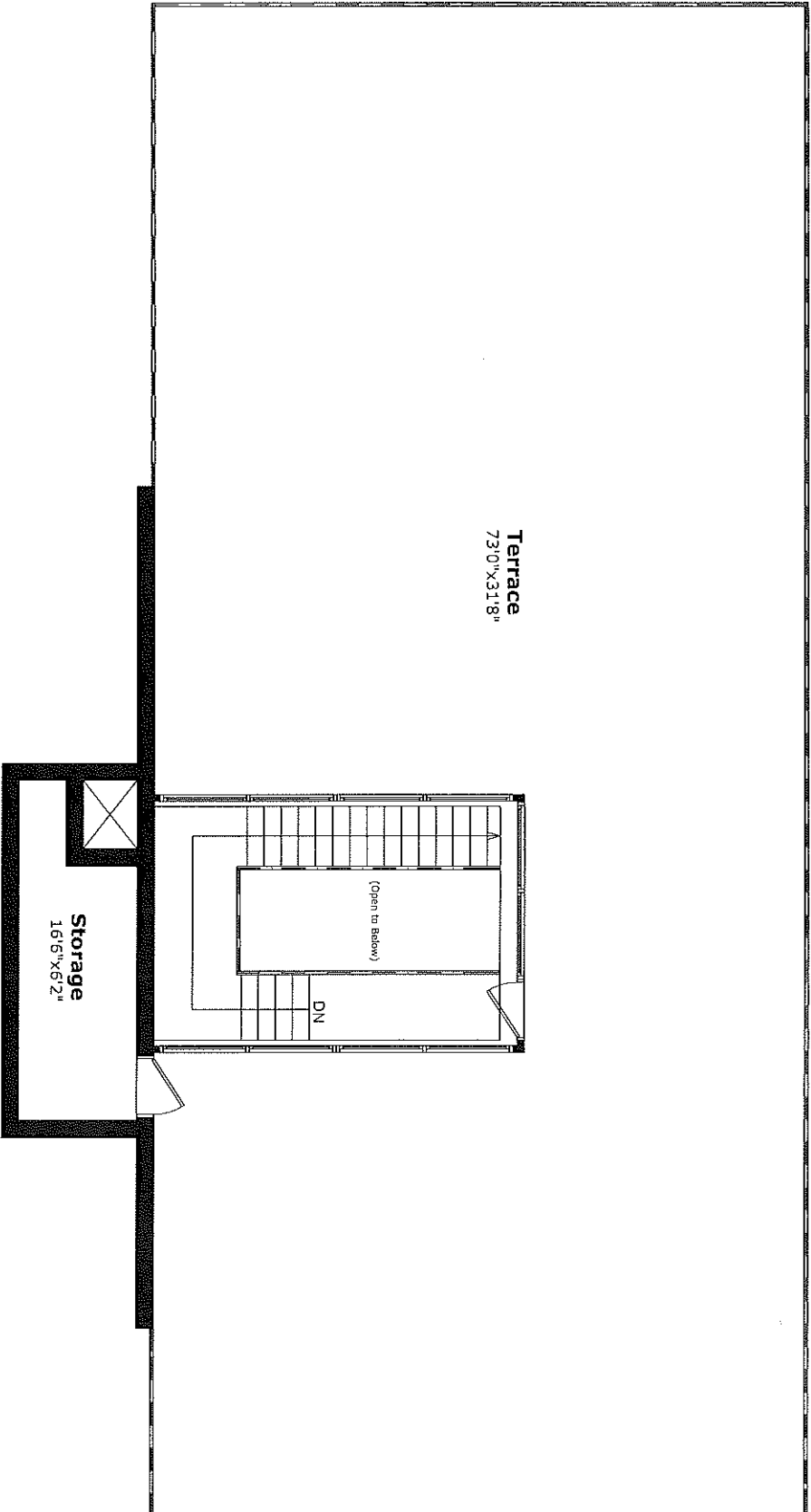


MAIN LEVEL

NOTE:
THIS FLOOR PLAN IS PROVIDED FOR
ILLUSTRATIVE PURPOSES ONLY.
BUYER TO VERIFY MEASUREMENTS
WWW.HOUSMAXX.CA

478 KING STREET WEST

SUITE PH 2



ROOF LEVEL

NOTE:
THIS FLOOR PLAN IS PROVIDED FOR
ILLUSTRATIVE PURPOSES ONLY.
BUYER TO VERIFY MEASUREMENTS
WWW.HOUSSMAX.CA

ROOM MEASUREMENT

478 King Street West PH2

Data Provided by www.houssmax.ca @ 2015

Imperial

Metric

Main Level

Foyer	7' 10"	x	15' 8"	2.39	x	4.78
Living Room	14' 3"	x	19' 9"	4.34	x	6.02
Dining Room	14' 3"	x	19' 9"	4.34	x	6.02
Kitchen	21' 2"	x	8' 0"	6.45	x	2.44
Pantry	10' 3"	x	7' 1"	3.12	x	2.16
Den/Library	10' 8"	x	14' 0"	3.26	x	4.27
Master Bedroom	17' 9"	x	16' 1"	5.41	x	4.89
2nd Bedroom	12' 6"	x	16' 1"	3.81	x	4.89
Laundry	10' 7"	x	7' 1"	3.23	x	2.16
Balcony	69' 8"	x	6' 8"	21.24	x	2.03

Upper Level

Terrace	73' 0"	x	31' 8"	22.25	x	9.65
Storage	16' 6"	x	6' 2"	5.02	x	1.88

Area Calculation

Main Level	2521.2 sq.ft.	Balcony	502.1 sq.ft.
Roof Level	359.0 sq.ft.	Terrace	2165.2 sq.ft.
<hr/> Total	<hr/> 2880.2 sq.ft.		