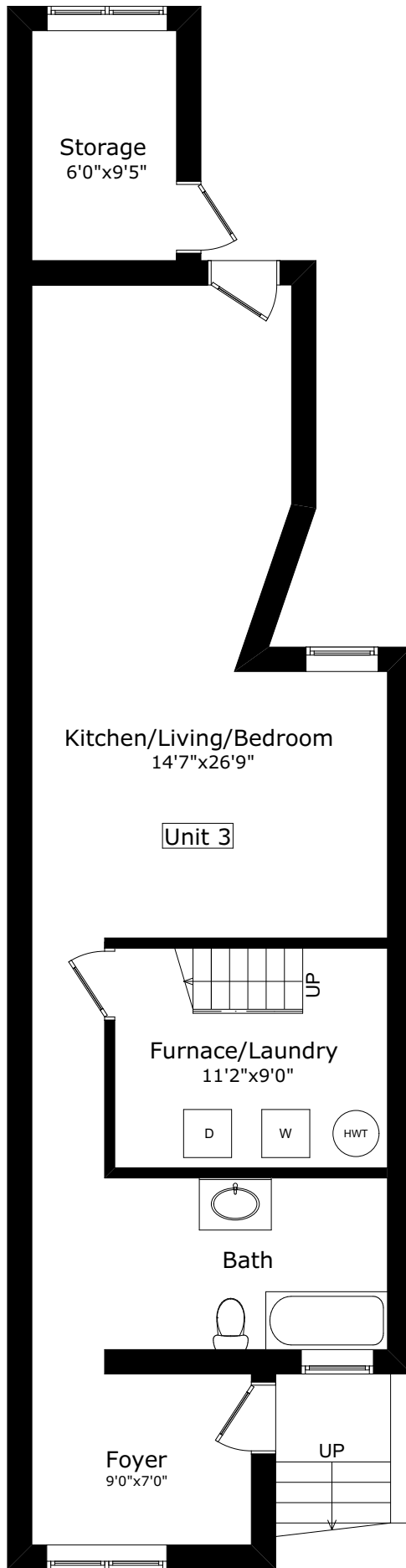


249 SHAW ST



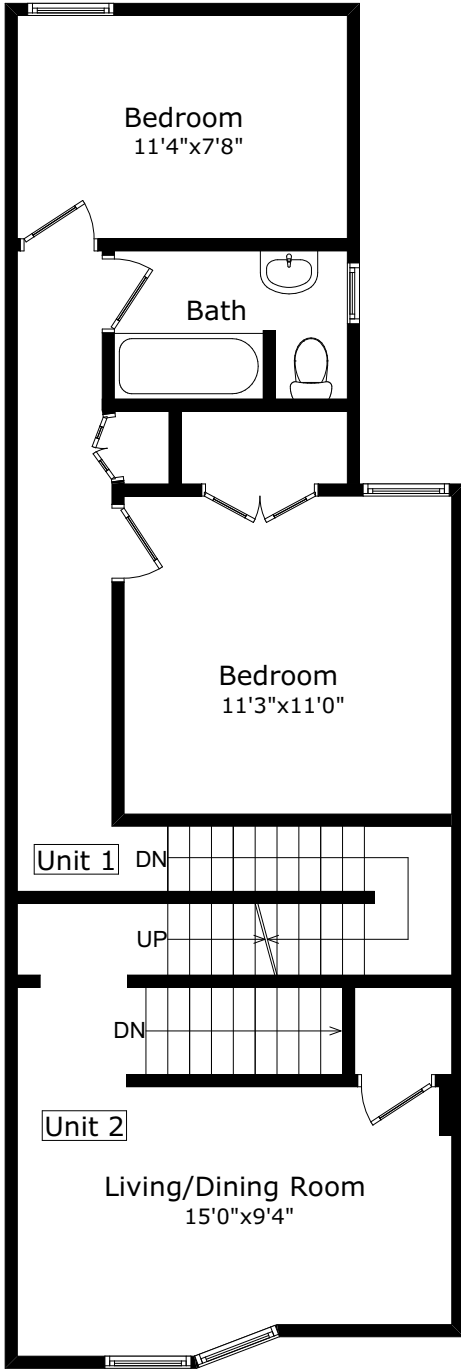
LOWER FLOOR



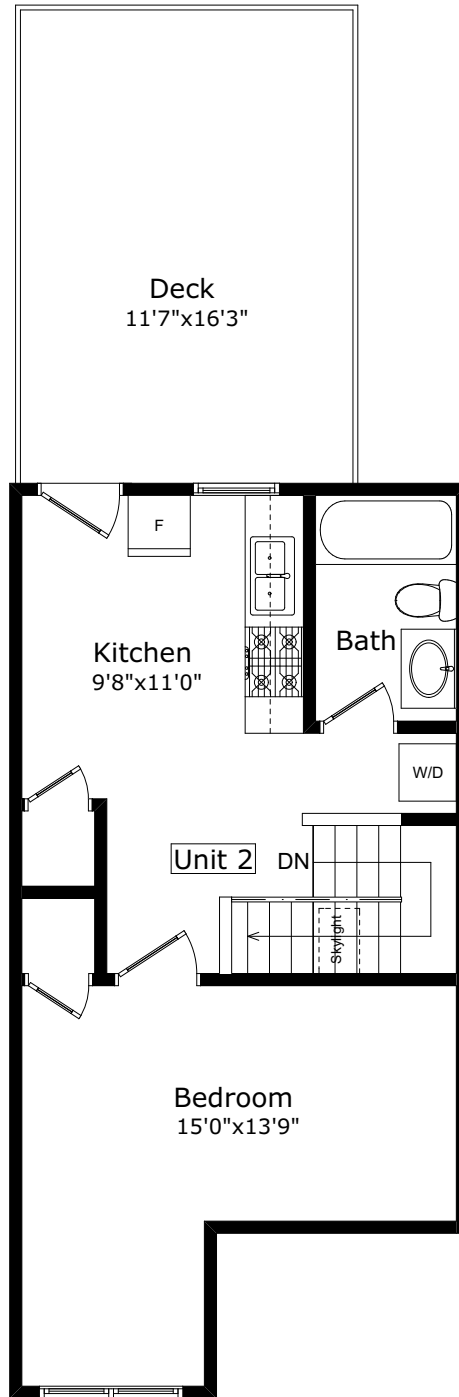
MAIN FLOOR

NOTE:
THIS FLOOR PLAN IS PROVIDED FOR
ILLUSTRATIVE PURPOSES ONLY
BUYER TO VERIFY MEASUREMENTS
WWW.HOUSSMAX.CA

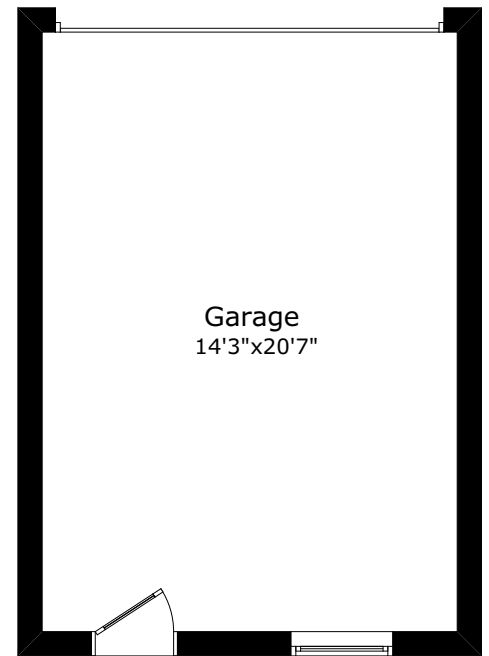
249 SHAW ST



SECOND FLOOR



THIRD FLOOR



GARAGE

NOTE:
THIS FLOOR PLAN IS PROVIDED FOR
ILLUSTRATIVE PURPOSES ONLY
BUYER TO VERIFY MEASUREMENTS
WWW.HOUSSMAX.CA

ROOM DATA SHEET

249 Shaw Street

Data Provided by www.houssmax.ca @2017

	Imperial			Metric		
	Width	x	Depth	Width	x	Depth
Main Floor						
Foyer	8' 9"	x	4' 1"	2.67	x	1.24
Living/Dining Room	15' 0"	x	11' 0"	4.57	x	3.35
Kitchen	11' 0"	x	11' 3"	3.35	x	3.43
Breakfast Room	6' 3"	x	13' 10"	1.91	x	4.22
Garage	14' 3"	x	20' 7"	4.34	x	6.27
Second Floor						
Bedroom	11' 3"	x	11' 0"	3.43	x	3.35
Bedroom	11' 4"	x	7' 8"	3.45	x	2.34
Living/Dining Room	15' 0"	x	9' 4"	4.57	x	2.84
Third Floor						
Bedroom	15' 0"	x	13' 9"	4.57	x	4.19
Kitchen	9' 8"	x	11' 0"	2.95	x	3.35
Deck	11' 7"	x	16' 3"	3.53	x	4.95
Lower Floor						
Foyer	9' 0"	x	7' 0"	2.74	x	2.13
Kitchen/Living/Bedroom	14' 7"	x	26' 9"	4.45	x	8.15
Furnace/Laundry	11' 2"	x	9' 0"	3.40	x	2.74

Area Calculation

Main Floor	780.0 sq.ft.	Garage	354.2 sq.ft.
Second Floor	670.5 sq.ft.		
Third Floor	445.8 sq.ft.		
Lower Floor	860.2 sq.ft.		
Total	2756.6 sq.ft.		