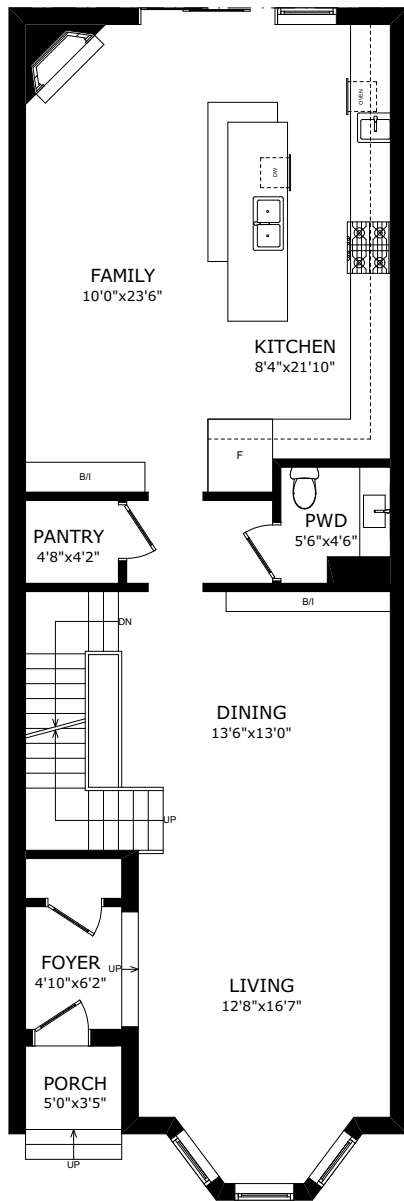
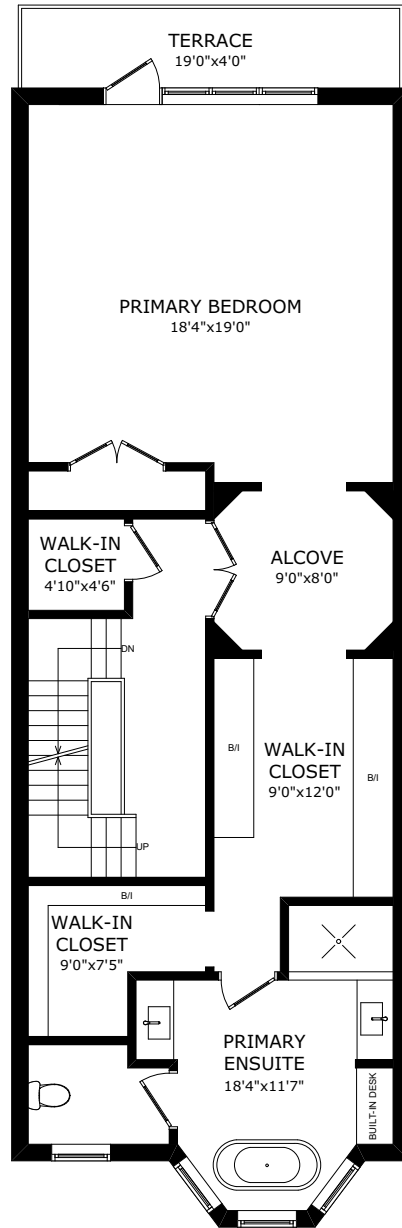


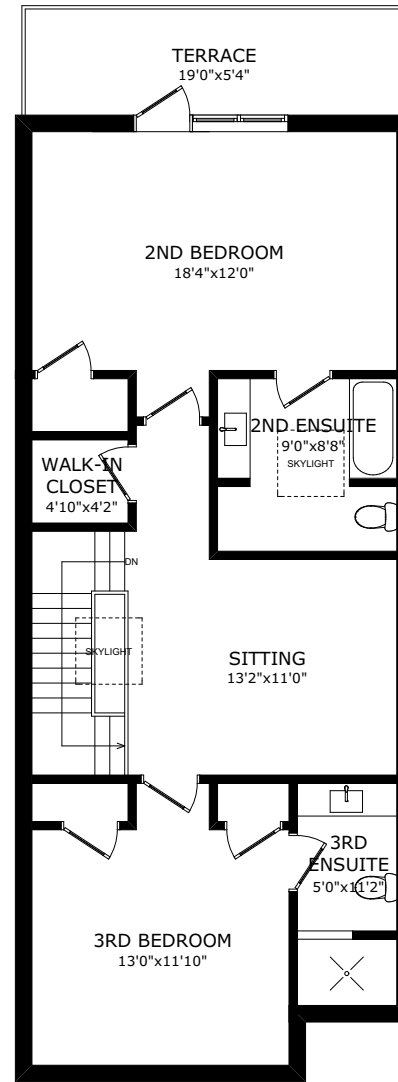
31 WEBSTER AVENUE



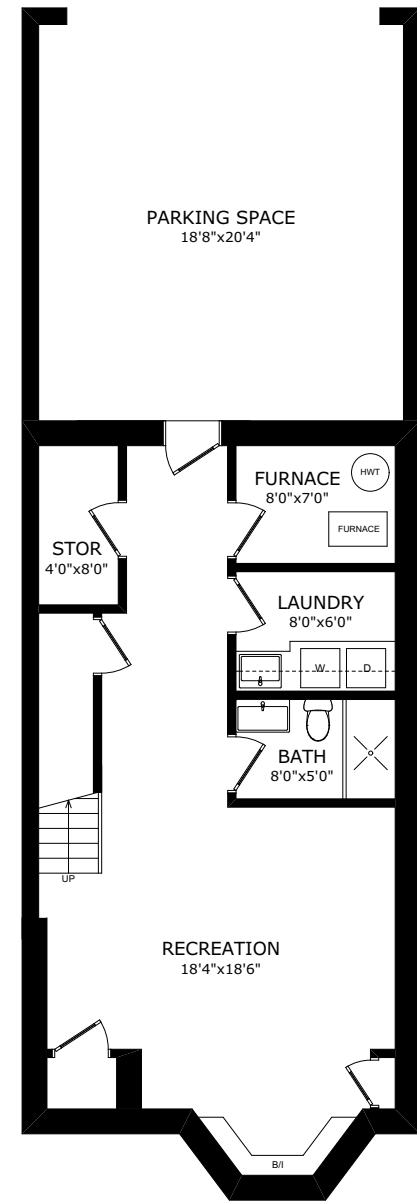
MAIN FLOOR



SECOND FLOOR



THIRD FLOOR



BASEMENT

ROOM DATA SHEET

31 Webster Avenue

Data Provided by www.houssmax.ca @ 2021

	Imperial			Metric		
	Width	x	Depth	Width	x	Depth
Main Floor						
Foyer	4' 10"	x	6' 2"	1.47	x	1.88
Living	12' 8"	x	16' 7"	3.86	x	5.05
Dining	13' 6"	x	13' 0"	4.11	x	3.96
Kitchen	8' 4"	x	21' 10"	2.54	x	6.65
Family	10' 0"	x	23' 6"	3.05	x	7.16
Pantry	4' 8"	x	4' 2"	1.42	x	1.27
Powder Room	5' 6"	x	4' 6"	1.68	x	1.37
Porch	5' 0"	x	3' 5"	1.52	x	1.04
Second Floor						
Primary Bedroom	18' 4"	x	19' 0"	5.59	x	5.79
Alcove	9' 0"	x	8' 0"	2.74	x	2.44
Primary Ensuite	18' 4"	x	11' 7"	5.59	x	3.53
Walk-in Closet	9' 0"	x	12' 0"	2.74	x	3.66
Walk-in Closet	9' 0"	x	7' 5"	2.74	x	2.26
Walk-in Closet	4' 10"	x	4' 6"	1.47	x	1.37
Terrace	19' 0"	x	4' 0"	5.79	x	1.22
Third Floor						
2nd Bedroom	18' 4"	x	12' 0"	5.59	x	3.66
3rd Bedroom	13' 0"	x	11' 10"	3.96	x	3.61
Sitting Area	13' 2"	x	11' 0"	4.01	x	3.35
2nd Ensuite	9' 0"	x	8' 8"	2.74	x	2.64
3rd Ensuite	5' 0"	x	11' 2"	1.52	x	3.40
Walk-in Closet	4' 10"	x	4' 2"	1.47	x	1.27
Terrace	19' 0"	x	5' 4"	5.79	x	1.63

Basement

Recreation	18' 4"	x	18' 6"	5.59	x	5.64
Laundry	8' 0"	x	6' 0"	2.44	x	1.83
Furnace	8' 0"	x	7' 0"	2.44	x	2.13
Storage	4' 0"	x	8' 0"	1.22	x	2.44
Bath	8' 0"	x	5' 0"	2.44	x	1.52
Parking Space	18' 8"	x	20' 4"	5.69	x	6.20

Area Calculation

Main Floor	1131 sq.ft.	Parking Space	415 sq.ft.
Second Floor	1103 sq.ft.		
Third Floor	955 sq.ft.		
Basement	741 sq.ft.		
<hr/>			
Total	3930 sq.ft.		